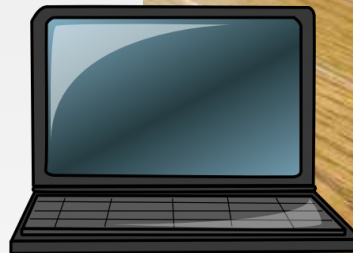


Information and Communication Technology: A MOTIVATION

MOTIVATION



presented by: **Rhiza S. Sadjad**

rhiza@unhas.ac.id <http://www.unhas.ac.id/rhiza/>

Question:



Why should we study ICT?
..... untuk apa belajar
ICT?

Today

**From Hiroshima-Nagasaki
to WTC 911,**



to WTC 911,

..... natural and social DISASTERS

..... a very very STRESSFUL

world of TODAY !



The FUTURE of our EARTH.....?



The HISTORY of CIVILIZATION

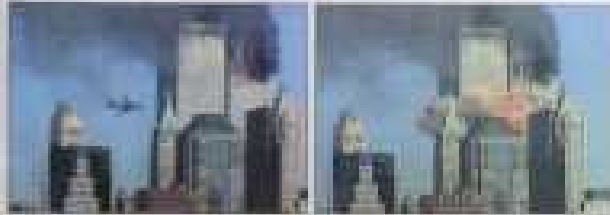
The History of Civilization

The ERA of	The CENTRAL Issue	Historical Events
Agriculture	Land	Social Revolution and Independence
Industry	Energy	HIROSHIMA NAGASAKI
INFORMATION	Information	WTC 911

TUESDAY, SEPTEMBER 11, 2001

Terror Attack

Hijacked Jets Fly Into Trade Center, Pentagon



Timeline of Terror

9:03 a.m. American Airlines Flight 11, a Boeing 767-300ER, is hijacked by four men posing as passengers. The plane is headed for the World Trade Center.

9:03 a.m. United Flight 175 is hijacked by four men posing as passengers. The plane is headed for the World Trade Center.

9:03 a.m. American Airlines Flight 11 strikes the North Tower of the World Trade Center, 110 stories above the ground.

9:03 a.m. United Flight 175 strikes the South Tower of the World Trade Center, 110 stories above the ground.

9:58 a.m. The Pentagon is struck by a hijacked Boeing 767-300ER, American Airlines Flight 77, 110 miles from Washington, D.C.

10:28 a.m. The fourth hijacked plane, a Boeing 767-300ER, crashes into a field near Shanksville, Pa., about 16 miles from the town of Shanksville.

10:28 a.m. The World Trade Center towers are evacuated.

10:28 a.m. The Pentagon is evacuated.

10:28 a.m. The White House is evacuated.

10:28 a.m. The U.S. Capitol is evacuated.

10:28 a.m. The U.S. Supreme Court is evacuated.

10:28 a.m. The U.S. Treasury Department is evacuated.

10:28 a.m. The U.S. Department of Justice is evacuated.

10:28 a.m. The U.S. Department of Education is evacuated.

10:28 a.m. The U.S. Department of Health and Human Services is evacuated.

10:28 a.m. The U.S. Department of Agriculture is evacuated.

10:28 a.m. The U.S. Department of the Interior is evacuated.

10:28 a.m. The U.S. Department of the Environment is evacuated.

10:28 a.m. The U.S. Department of the Navy is evacuated.

10:28 a.m. The U.S. Department of the Army is evacuated.

10:28 a.m. The U.S. Department of the Air Force is evacuated.

10:28 a.m. The U.S. Department of the State is evacuated.

10:28 a.m. The U.S. Department of the Treasury is evacuated.

10:28 a.m. The U.S. Department of the Justice is evacuated.

10:28 a.m. The U.S. Department of the Education is evacuated.

10:28 a.m. The U.S. Department of the Health and Human Services is evacuated.

10:28 a.m. The U.S. Department of the Agriculture is evacuated.

10:28 a.m. The U.S. Department of the Interior is evacuated.

10:28 a.m. The U.S. Department of the Environment is evacuated.

10:28 a.m. The U.S. Department of the Navy is evacuated.

10:28 a.m. The U.S. Department of the Army is evacuated.

10:28 a.m. The U.S. Department of the Air Force is evacuated.

10:28 a.m. The U.S. Department of the State is evacuated.

A Day of Carnage and Chaos

By [Name] and [Name]

NEW YORK — The World Trade Center towers were hit by two hijacked planes at 9:03 a.m. on Tuesday, Sept. 11, 2001. The planes, American Airlines Flight 11 and United Flight 175, struck the towers at the 110th floor, 110 stories above the ground.

The towers were evacuated at 10:28 a.m. The Pentagon was hit by a hijacked plane, American Airlines Flight 77, at 9:58 a.m. The plane struck the Pentagon at the 14th floor, 14 stories above the ground.

The White House was evacuated at 10:28 a.m. The U.S. Capitol was evacuated at 10:28 a.m. The U.S. Supreme Court was evacuated at 10:28 a.m. The U.S. Treasury Department was evacuated at 10:28 a.m. The U.S. Department of Justice was evacuated at 10:28 a.m. The U.S. Department of Education was evacuated at 10:28 a.m. The U.S. Department of Health and Human Services was evacuated at 10:28 a.m. The U.S. Department of Agriculture was evacuated at 10:28 a.m. The U.S. Department of the Interior was evacuated at 10:28 a.m. The U.S. Department of the Environment was evacuated at 10:28 a.m. The U.S. Department of the Navy was evacuated at 10:28 a.m. The U.S. Department of the Army was evacuated at 10:28 a.m. The U.S. Department of the Air Force was evacuated at 10:28 a.m. The U.S. Department of the State was evacuated at 10:28 a.m.

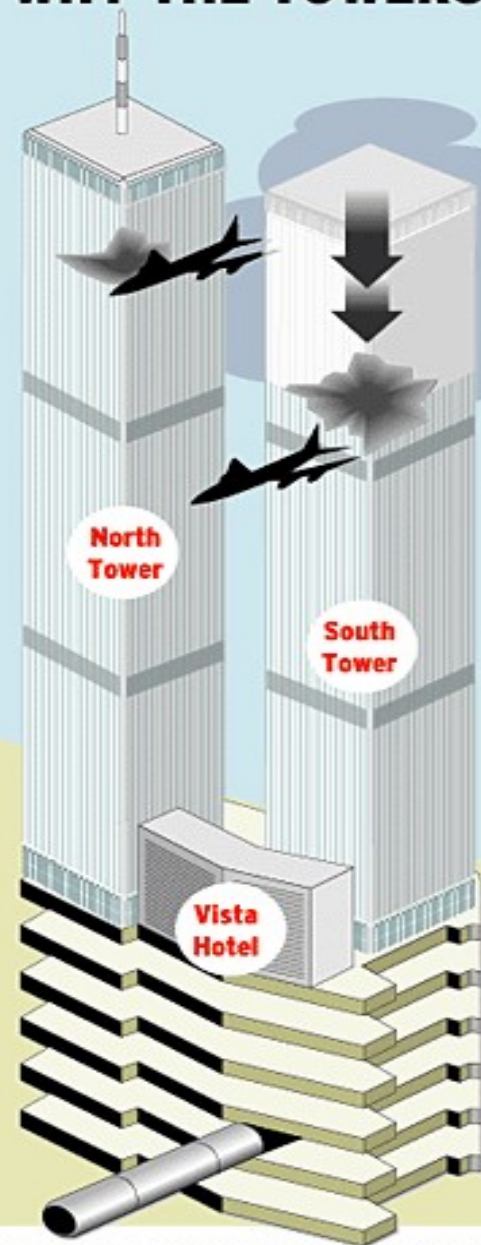
WTC 911



WTC 911



WHY THE TOWERS COLLAPSED



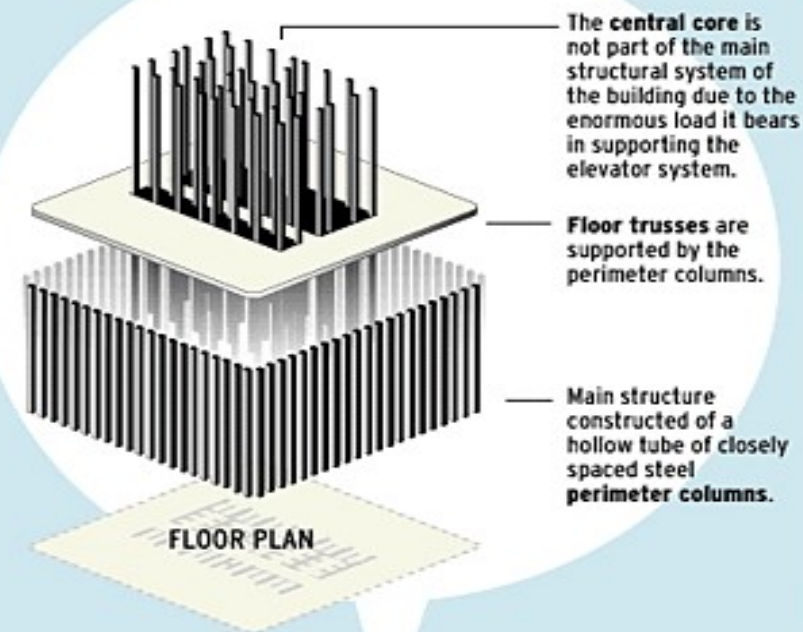
The impact of the plane crash destroyed a significant number of perimeter columns on several floors of the building, severely weakening the entire system.

As fire raged in the upper floors, the heat gradually affected the remaining structure.

The prolonged high temperatures, fuelled by the large volumes of aviation gas, weakened the steel core struts.

When the fire reached 1,500°F, the weakened struts collapsed and the truss system collapsed vertically.

The building's perimeter columns and floor trusses form a steel lattice, which was designed to act as a wind brace, thereby keeping disturbance away from the central core.

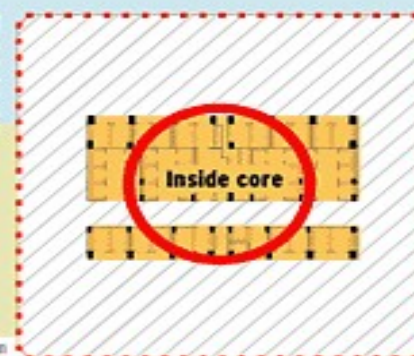


The central core is not part of the main structural system of the building due to the enormous load it bears in supporting the elevator system.

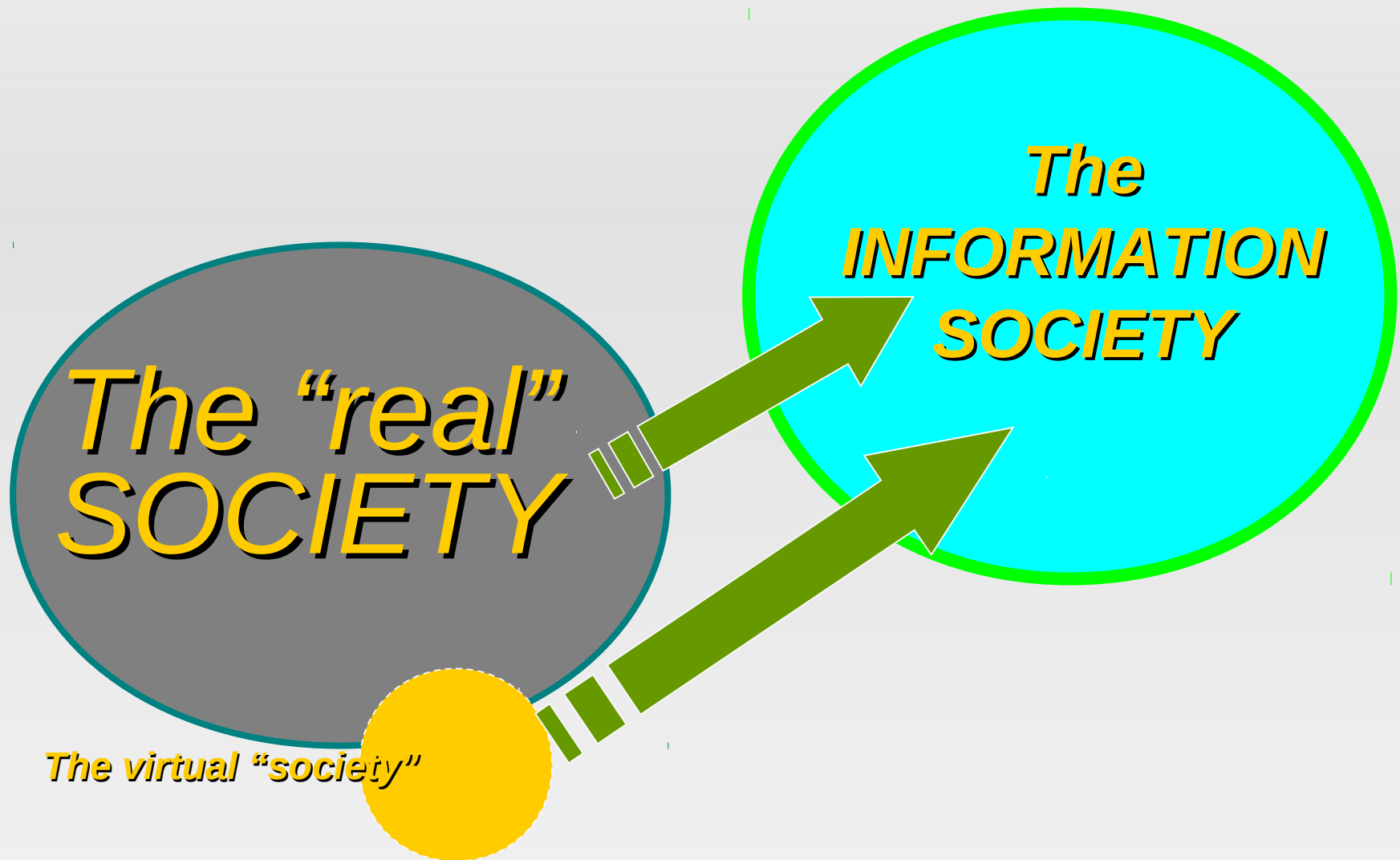
Floor trusses are supported by the perimeter columns.

Main structure constructed of a hollow tube of closely spaced steel perimeter columns.

FLOOR PLAN OF THE WORLD TRADE CENTRE



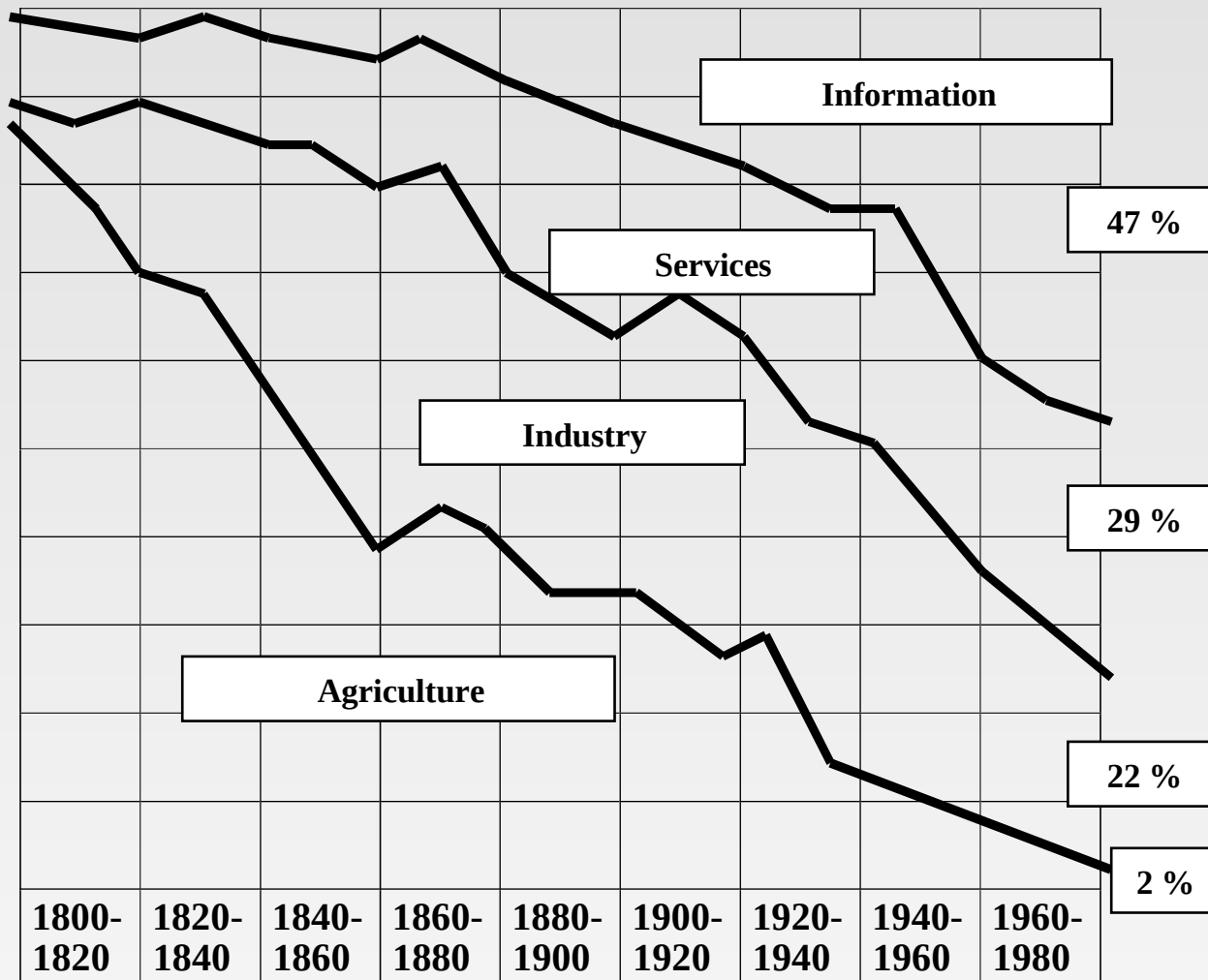
A hollow tube of closely spaced perimeter columns form the main structural component of the tower.



The GLOBAL Information ERA !

The Information Society

The Work Force Composition



Gambar 1

The Change of the Work Force Composition in the USA 1800-1980
(Source:: Everett M. Rogers, **1986**, *Communication Technology*, page 11)

Information Workers

Individuals whose main activities are

PRODUCING.....

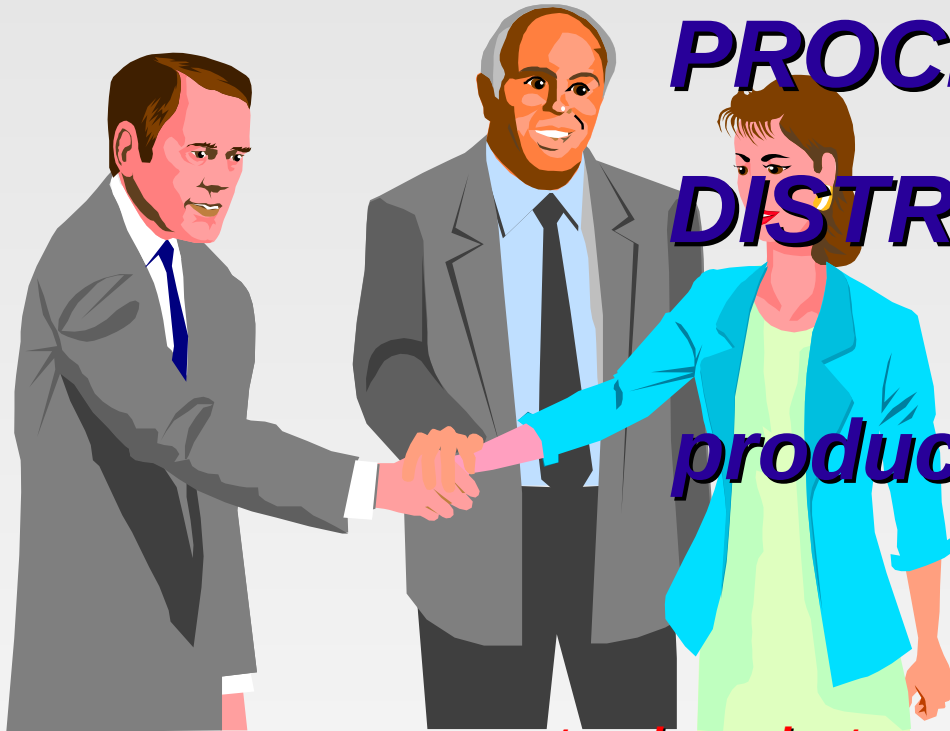
PROCESSING.....

DISTRIBUTING.....

INFORMATION

producing

The INFORMATION TECHNOLOGY



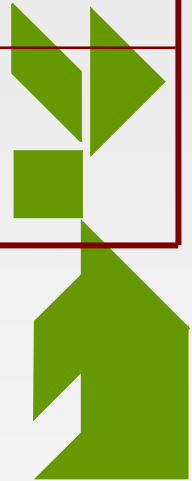
..... teachers, lecturers, academicians, reseachers, writers, reporters, managers, public relation, etc.... .

C/O

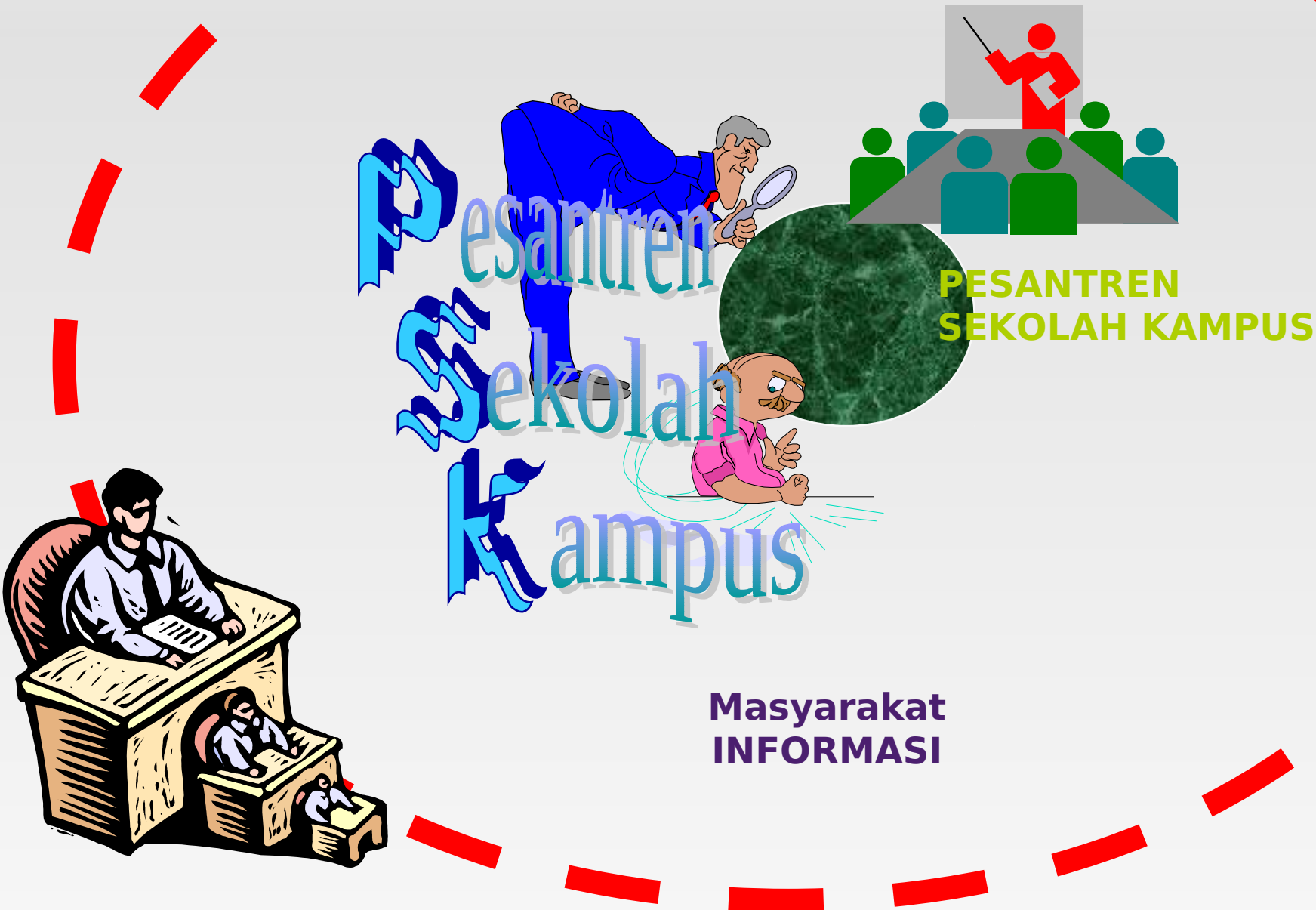
Key Social Institutions

<i>Society</i>	<i>Key Social Institution</i>
<i>Agricultural</i>	FARM
<i>Industrial</i>	FACTORY
<i>Information</i>	UNIVERSITY

(Source: Everett M. Rogers, [1986], “*Communication Technology*”, hal. 13)



The **INDONESIAN** Information Societies:



SELESAI

The END

The END

THE END

Selamat mengikuti
KULIAH ini
dengan SEKSAMA